

Tunnel Ventilation

Ventilation shafts:

- Connect the vent plant to tunnels to allow airflow from the tunnel or supply airflow to the tunnel

Tunnel ventilation fans:

- Exhaust airflow from or supply airflow to the tunnels during normal, maintenance and fire emergency operations

Louvers:

- Allow exhausting tunnel airflow to atmosphere or supply of outside air to tunnels

Sound attenuators (silencers):

- Reduce fan noise levels at building and in tunnels

Operation and control rooms:

- House electrical, mechanical and communications for tunnel operations

Emergency egress/access stairs:

- Allow for passenger egress / fire department access in an emergency

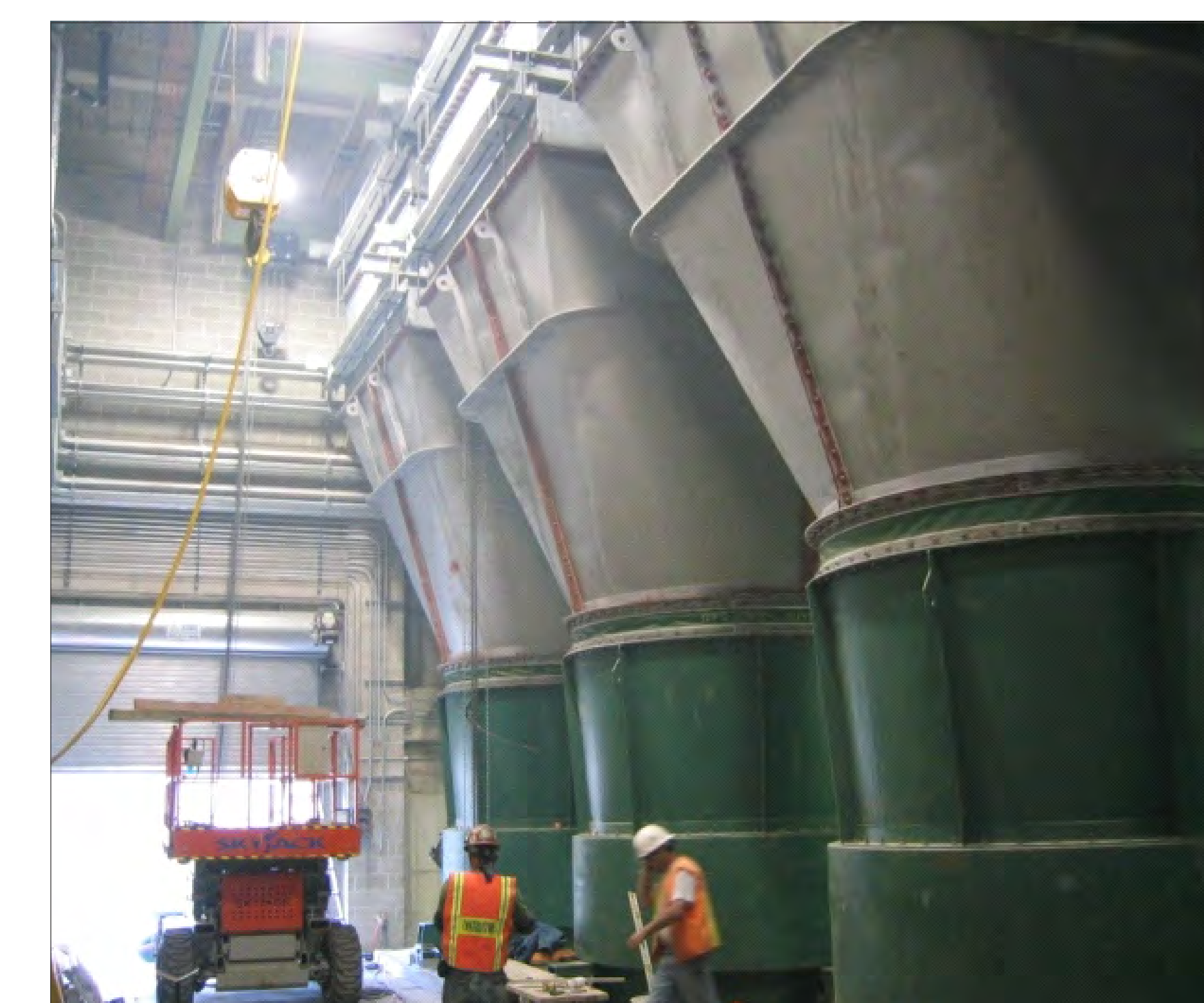
Louvers



Red Line Ventilation Shaft Rendering, Fells Point



Electrical panels



Ventilation fans