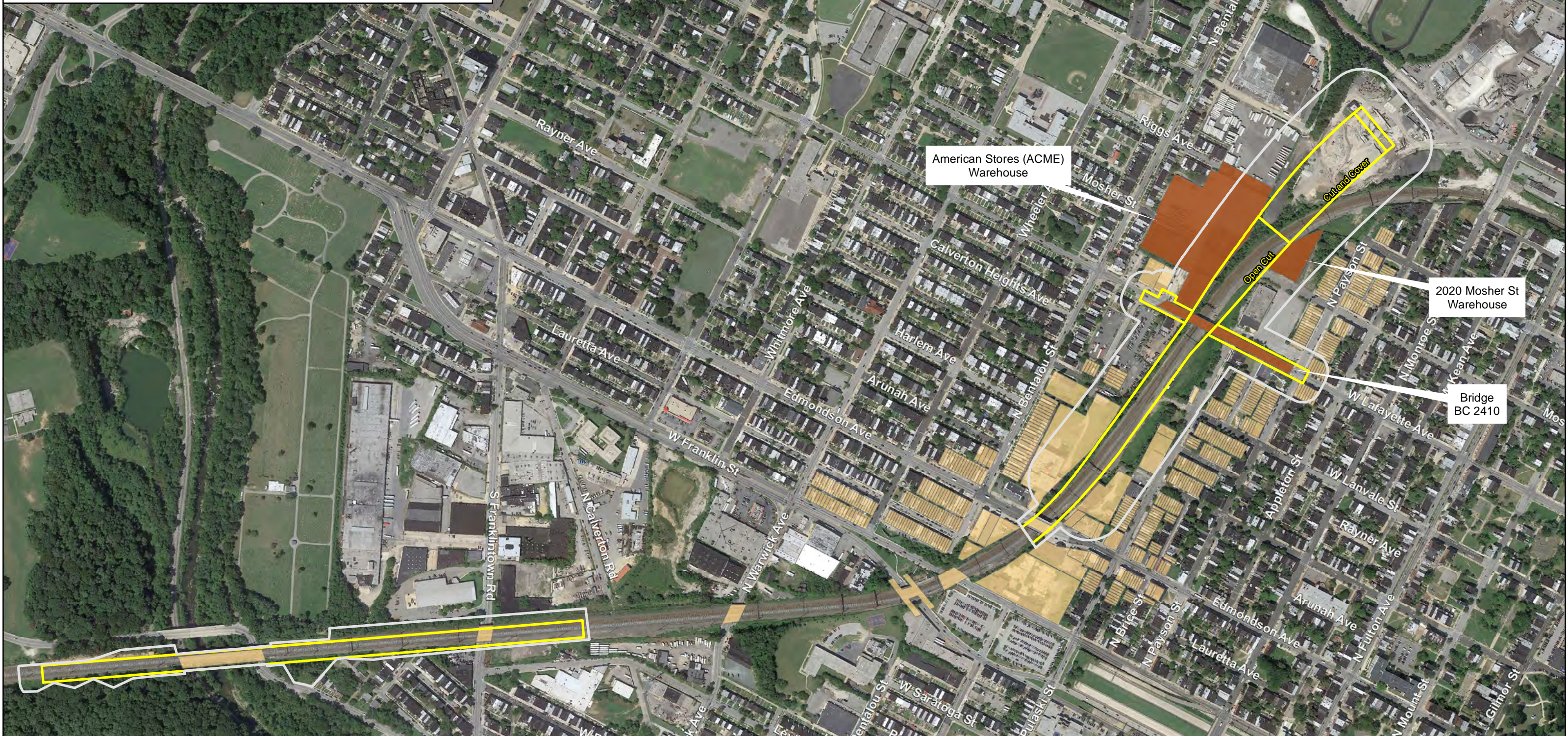


**Historic Architectural Area of Potential Effects  
and Effects to Contributing Elements**  
Detail, Alternative 3 Option A  
South Portal Vicinity



**Legend**

- Historic Architectural Area of Potential Effects
- Surface Excavation and Track Work Areas
- Direct Building/Structure Effect
- Potential Indirect Effect

NORTH

0 260 520 1,040  
Feet

**B&P TUNNEL PROJECT**

U.S. Department of Transportation  
Federal Railroad Administration

Maryland Department  
of Transportation

Map Source: Google Pro Aerial, 2015