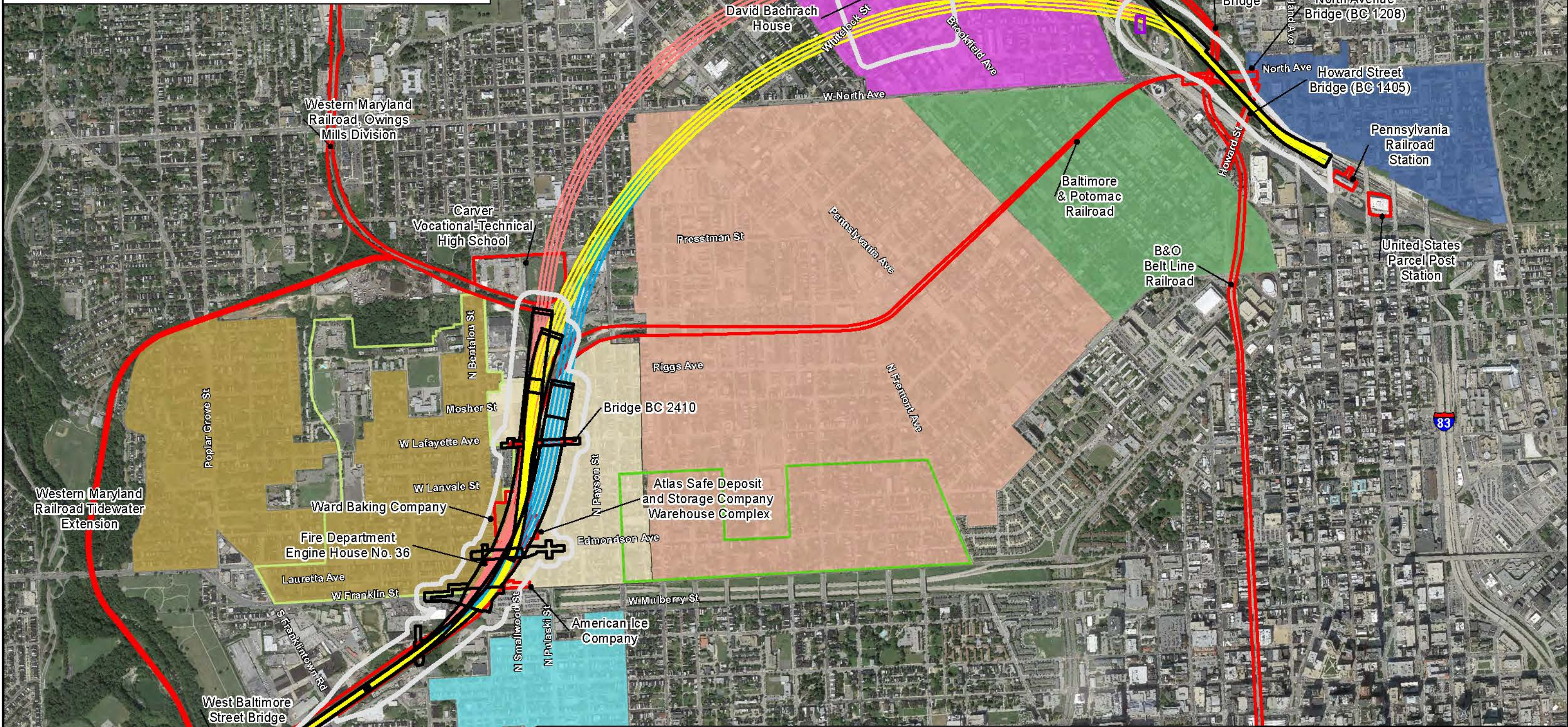


# Historic Architectural Area of Potential Effects and Historic Properties

## Alternative 3 Options A, B, and C Overview



**Legend**

Historic Architectural Area of Potential Effects	Bolton Hill Historic District	North Central Historic District
Surface Excavation and Track Work Areas	Bon Secours Historic District	Old West Baltimore Historic District
Individually Listed or Eligible Historic Property	Edmondson Avenue Historic District	Reservoir Hill Historic District
Alternative 3 Option A Track Centerlines	Greater Rosemont Historic District	Possible Intermediate Vent Plant Location
Alternative 3 Option B Track Centerlines	Harlem Park Historic District	Approximate North Portal Vent Plant Location
Alternative 3 Option C Track Centerlines	Midtown Edmondson Historic District	

Map Source: Google Pro Aerial, 2015

NORTH

**B&P TUNNEL PROJECT**

U.S. Department of Transportation  
**Federal Railroad Administration**

Maryland Department of Transportation