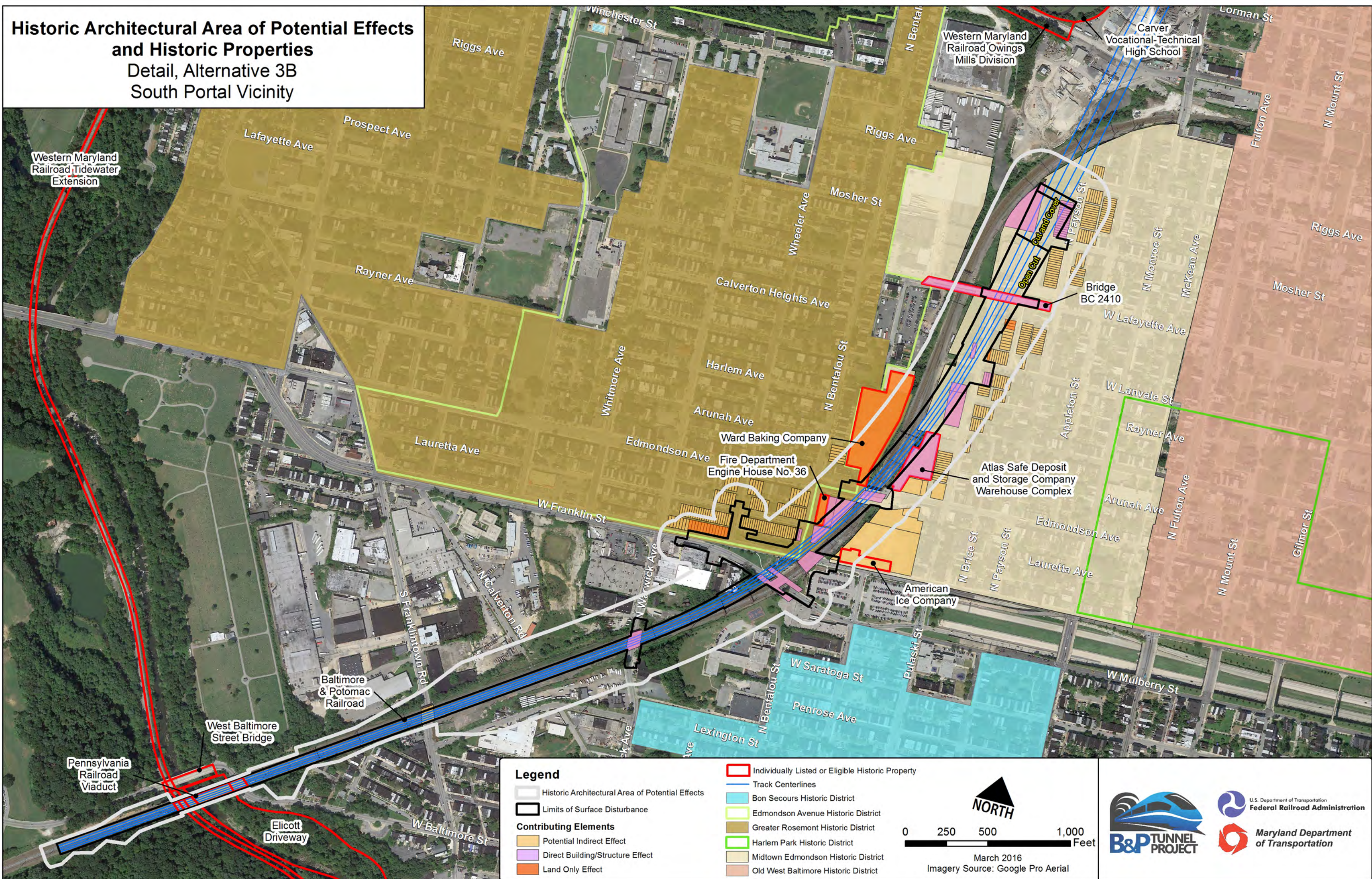


Historic Architectural Area of Potential Effects and Historic Properties

Detail, Alternative 3B

South Portal Vicinity



Legend

- Historic Architectural Area of Potential Effects
- Limits of Surface Disturbance
- Contributing Elements**
- Potential Indirect Effect
- Direct Building/Structure Effect
- Land Only Effect

- Individually Listed or Eligible Historic Property
- Track Centerlines
- Bon Secours Historic District
- Edmondson Avenue Historic District
- Greater Rosemont Historic District
- Harlem Park Historic District
- Midtown Edmondson Historic District
- Old West Baltimore Historic District

